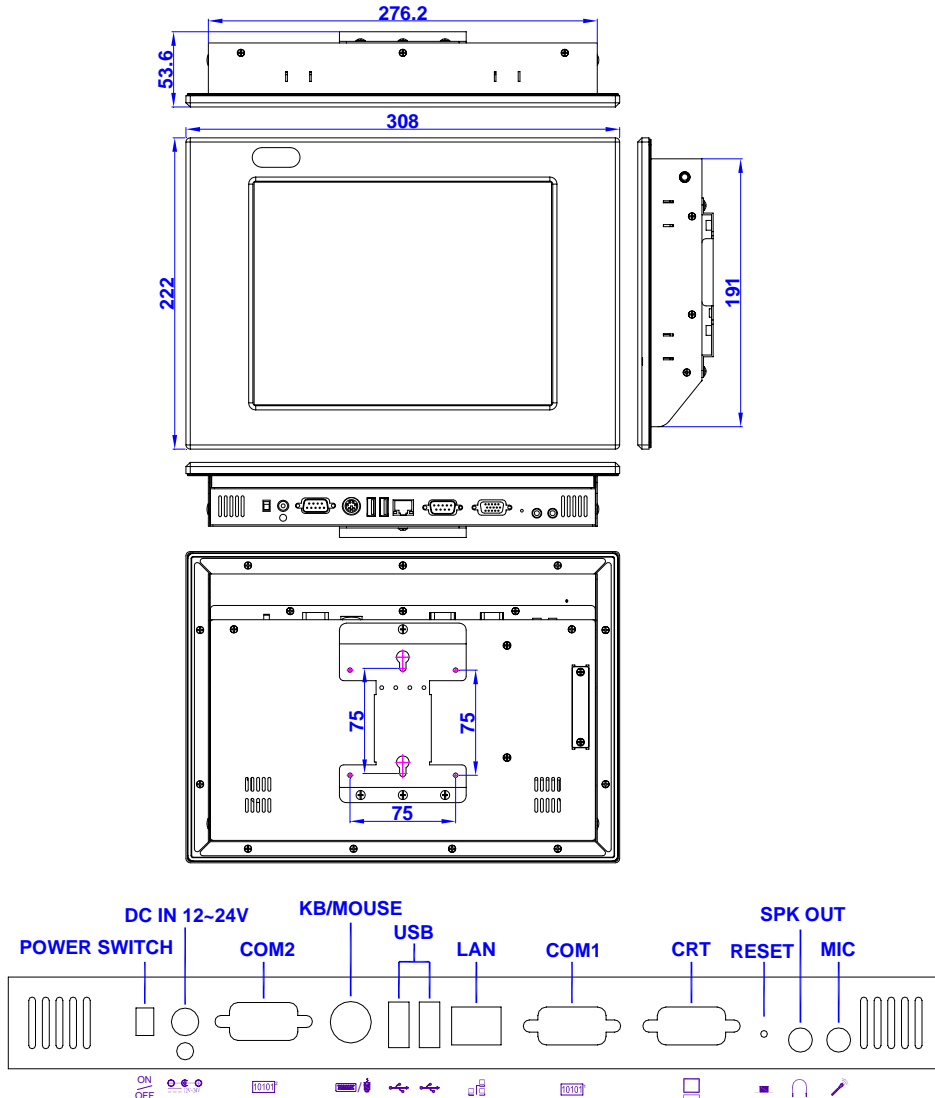


## 1. Brief

The FP8100x is a 10-inch Panel PC with touch screen device (FP8100xT). This user's quick reference provides its outlook information and I/O outlets description.

## 2. Dimensions (in mm) and Rear I/O Informations



## 3. Packing List

- 1 FP8100x/FP8100xT industrial Panel PC.
- 1 AC to DC19V power adapter and 1 AC power code cable.
- 1 pack of 2.5" SATA HDD installing kit with 4+2 screws.
- 1 Y-cable (3-end) keyboard plus mouse port adapter cable.
- 1 pack of Wall Mounting Kit with 4 fixed screws.
- 1 pack of Embedded Mounting Kit with 6 clamps and 6 fixed screws.
- 1 pack of panel stand kit with 4 fixed screws. (FP8100K1, optional)
- 1 touch pen for touch screen panel (Optional)
- 1 Compact Disc including user's manual and touch screen drivers.

## 4. Features

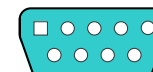
- \* **Processor Board**  
AMD Geode LX800 processor with 1GB DDR RAM.
- \* **I/O Outlets**  
One 10/100 base-TX Ethernet port.  
2 USB ports (V2.0) and 2 RS-232 serial ports.  
1 VGA (CRT) and 1 PS/2 compatible keyboard/mouse interface.  
2 Audio connectors for Earphone and Microphone.  
1 mini PCIe card socket for wireless/GPRS modules.  
1 DC-In plug connector for DC power input.  
1 power button and 1 reset button.
- \* **Storage Bay**  
1 CompactFlash socket for CompactFlash modules or MicroDrives.  
One 2.5" SATA hard disk space.
- \* **Power requirement**  
+12 ~ +24V DC, 1.44A maximum (0.92A typical) with 19V input voltage.
- \* **Mechanical**  
Dimensions: 54mm(D) x 308mm(W) x 222mm(H)  
Weight: 3.5Kg.(Standard packing)  
Approval: IP65 Compliant.

## 5. I/O outlets and LED Indicator

### A. Power Connector and I/O Connectors Group #1 (COM2, Keyboard/Mouse, and USB)



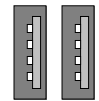
DC Plug-In Connector  
DC +12V to +24V, 35W minimum



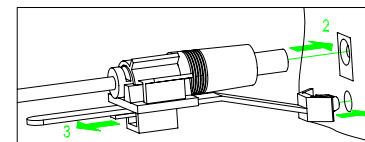
COM1



Keyboard  
(& Mouse)

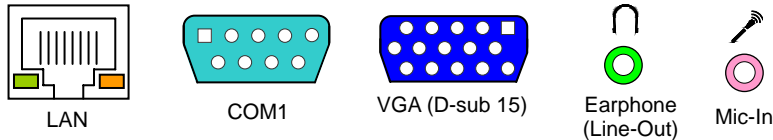


USB#1 & #2



Note: Standard PS/2 keyboard can be plugged into this connector without any adapter cable. If PS/2 keyboard and mouse will be used simultaneously, the included Y-type adapter cable is needed.

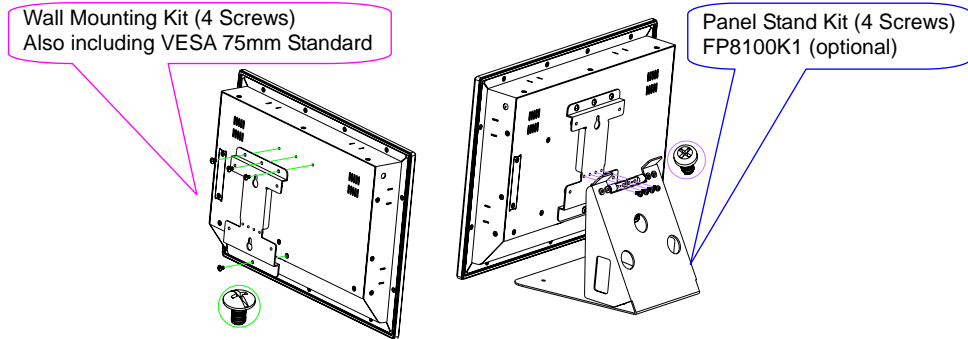
## B. I/O Connectors Group #2 (LAN, COM1, VGA, and Audio)



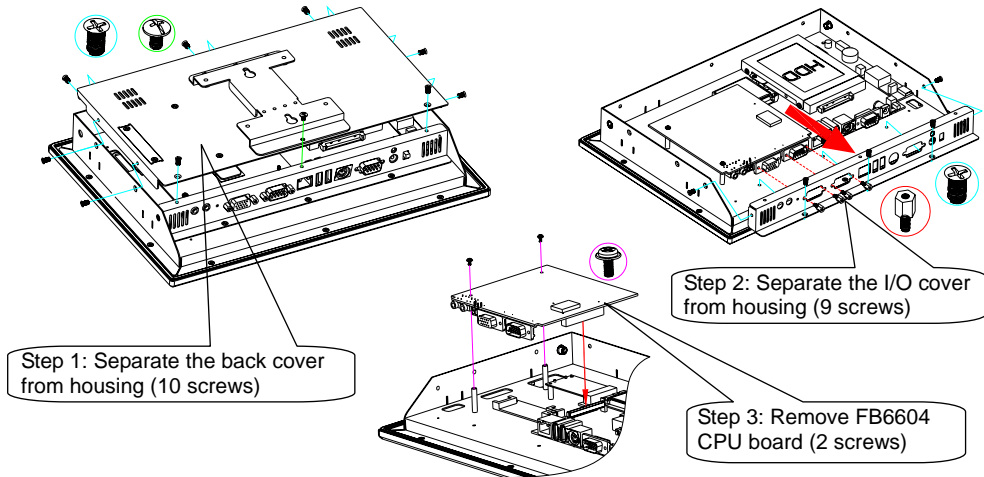
Note : The LAN port is a RJ45 connector with 2 LEDs. The orange LED indicates data is accessing and the green LED indicates on-line status.

## 6. Installation

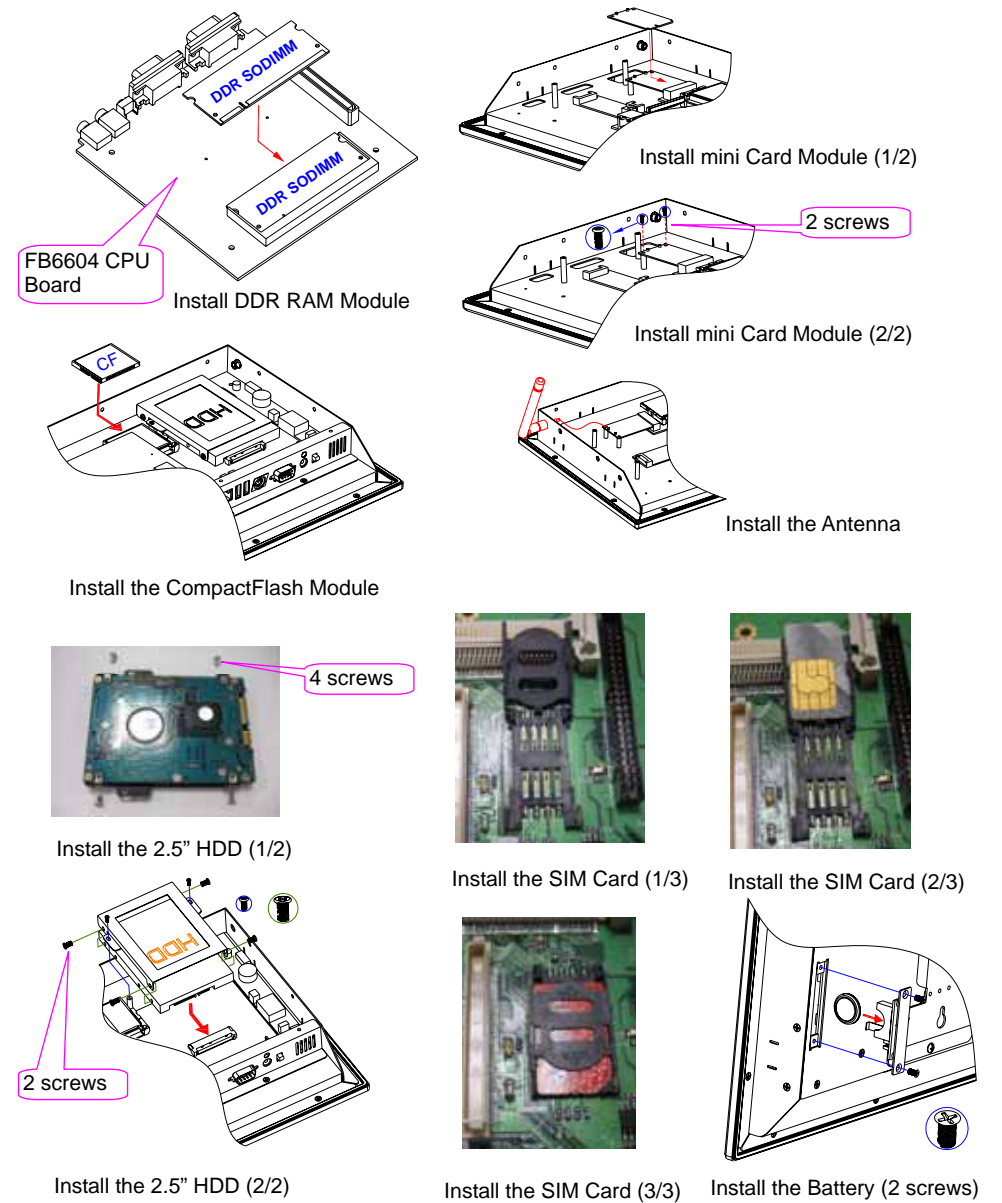
### A. Installing the Wall Mount Kit and Panel Stand Kit



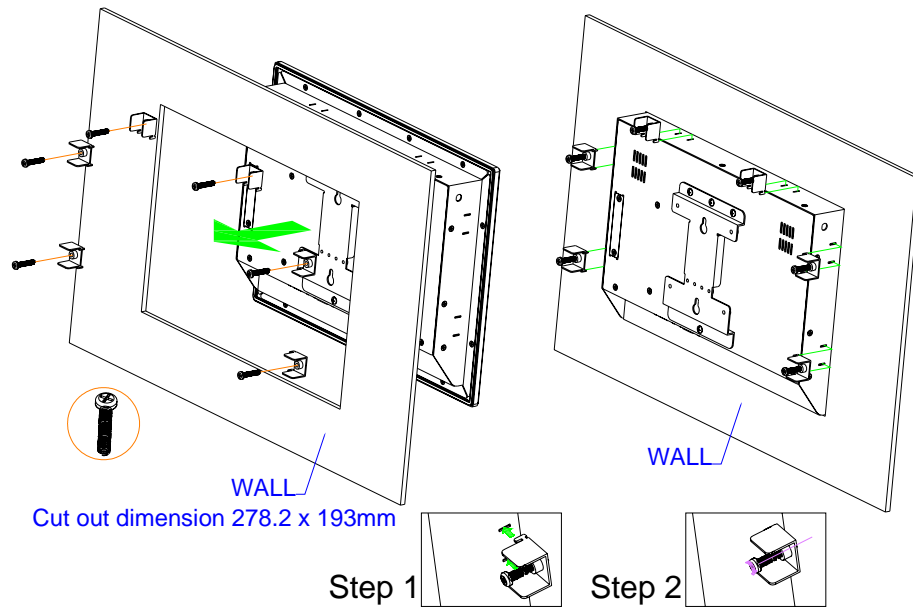
### B. Open the Cover for installing 2.5" HDD, CompactFlash, DDR RAM, WLAN, and Antenna



### C. Installing DDR, HDD, CF, mini Card, SIM, Antenna, and Battery (RTC & CMOS Ram)



## D. Installing the Embedded Mounting Kit (6 Clamps and 6 Screws)



End of Document